

WPRW-LED

Construction:

- Cast aluminum housing & hinged front frame
- Aluminum reflector
- Clear tempered glass lens

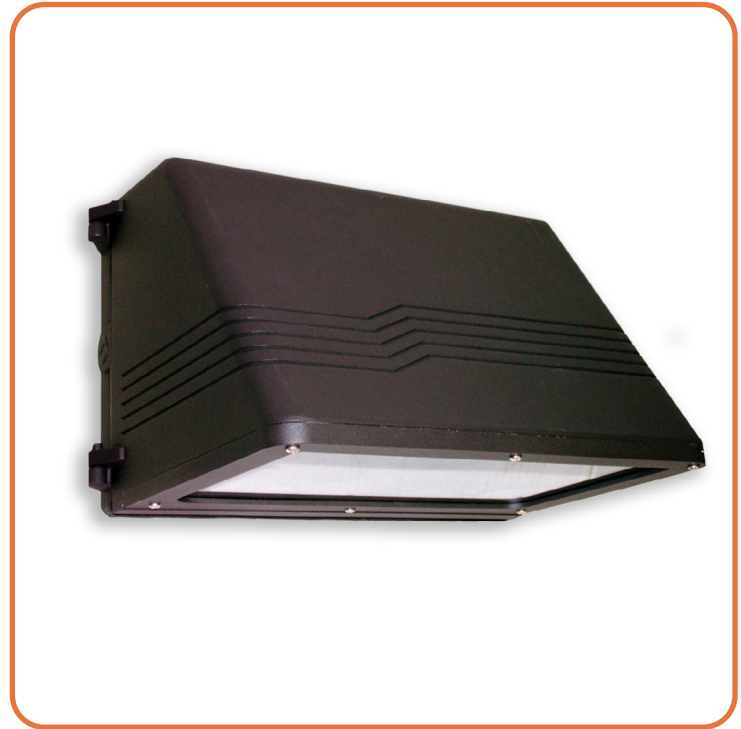
Light Source:

- LED

Notes:

- Wall mounting bracket attaches to 4" recessed outlet box
- 1/2" coin plugs for photocell or surface mount conduit
- Optional Photocell – specify voltage
- Optional Battery backup
- Type III Distribution
- Dark Sky compliant
- UL listed WET location
- LED Components
 - Distributed Array
 - CRI > 80
 - 5-Year Warranty on LED Components

Type:	
Job Name:	



WPRW-9-LED

Height - 9 1/8"
Width - 14 1/4"
Depth - 14 3/4"

WPRW-18-LED

Height - 9 1/8"
Width - 18 1/4"
Depth - 13 3/4"



ORDERING INFORMATION

Example: WPRW-18-LED-U-O3C-2-Z99-CEG

WPRW

Size	LED					Kelvin	Cage	Finish	Diffusers	Options
		Watts	Source Lumens	Dimming	Energy Star	2 3000K 4 4000K		Z99 Bronze	CEG Clear Tempered Glass	21 Photocell - See Notes -01 120 volt -02 277 volt
9-LED	O2C	18	2420	0-10v	NO	Optional 3 3500K				Battery Backup Options (Available with 0-10v only) BB10 10 Watts (1170lm) for 90-Minutes
	O3C	27	3630	0-10v	NO					
	O4C	36	4840	0-10v	NO					
18-LED	O2C	18	2420	0-10v	NO					
	O3C	27	3630	0-10v	NO					
	O4C	36	4840	0-10v	NO					



28435 Industry Drive., Valencia, California 91355
West Coast Sales: 800-325-4448 / 661-257-0286 • fax 800-323-2346 / 661-257-0201
East Coast Sales: 866-350-0991 • fax 866-490-5754
www.lightwayind.com • sales@lightwayind.com

