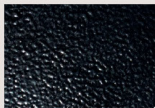




B1 Satin Black



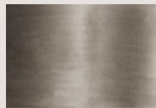
B2 Textured Black



M13 Anodized Silver



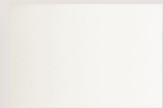
T6 Pewter



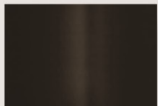
P9 Brushed Nickel



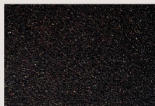
W13 Pearl Beige



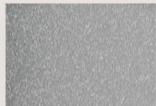
W1 Yolk White



Z1 Satin Bronze



Z3 Textured Bronze



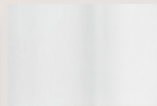
T4 Shimmer Gray



P2 Brushed Aluminum



W3 Textured White



W2 Gloss White



28435 Industry Drive., Valencia, California 91355
West Coast Sales: 800-325-4448 / 661-257-0286 • fax 800-323-2346 / 661-257-0201
East Coast Sales: 866-350-0991 • fax 866-490-5754
www.lightwayind.com • sales@lightwayind.com



DKAW-LED

Construction:

- Steel housing, chassis and cage
- Shield design offset from lens
- Diffuser is .10" thick extruded white acrylic

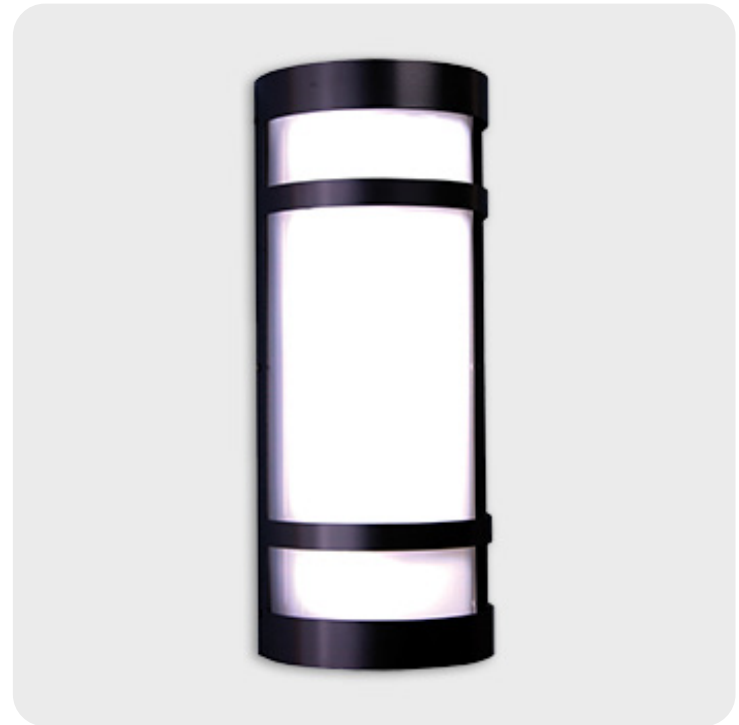
Light Source:

- LED
- Dimming to 10% **Included**

Notes:

- Integral mounting plate; keyhole slots left and right
- Top and bottom white acrylic lens- standard
- Optional photocell (21) increases fixture depth 1 1/2"
- Optional battery backup (Excluding DKAW-10)
- UL and CUL listed **WET** location
- LED Components
 - Replaceable Module
 - CRI > 90
 - Integral Power Supply
 - 5-Year Warranty on LED Components

Type:	
Job Name:	



DKAW-10	DKAW-16	DKAW-22	DKAW-26
Height - 10"	Height - 16"	Height - 22 1/4"	Height - 26 1/2"
Width - 9"	Width - 9"	Width - 9"	Width - 9"
Depth - 6"	Depth - 6"	Depth - 6"	Depth - 6"



ORDERING INFORMATION

Example: DKAW-26-LED-O2C-4-B1-WSA-DIM

DKAW

Size	LED					Kelvin	Cage	Finish	Diffuser	Options
		Watts	Source Lumens	Dimming	Energy Star					
10-LED	O2A	12	1600	0-10v	NO	2 3000K 3 3500K 4 4000K		B1 Satin Black B2 Text Black Z1 Satin Bronze Z3 Text Bronze W1 Yolk White W2 Gloss White T4 Shimmer Gray M13 Anod Silver T6 Pewter W13 Pearl Beige	WSA White Smooth Acrylic	DIM LED dimming driver (0 - 10v)
16-LED	O2C	18	2420	0-10v	NO					21 Photocell - Specify voltage 01 - 120 volt 02 - 277 volt
22-LED	O2B	15	2000	0-10v	NO					
	O3C	27	3630	0-10v	NO					
	O4B	29	4000	0-10v	NO					
26-LED	O2C	18	2420	0-10v	NO					42 All Aluminum Construction
	O4C	36	4840	0-10v	NO					39 J-Box with knockouts on all sides
							Optional (See Price List) M17 Brass Powder P2 Brushed Alum P9 Brushed Nickel			Battery Backup Options (Available with 0-10v only) (Excludes DKAW-10) BB10 10 Watts (1170lm) for 90-Minutes



28435 Industry Drive., Valencia, California 91355
 West Coast Sales: 800-325-4448 / 661-257-0286 • fax 800-323-2346 / 661-257-0201
 East Coast Sales: 866-350-0991 • fax 866-490-5754
 www.lightwayind.com • sales@lightwayind.com

