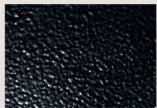
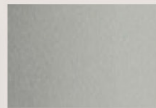




B1 Satin Black



B2 Textured Black



M13 Anodized Silver



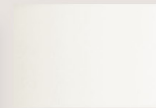
T6 Pewter



P9 Brushed Nickel



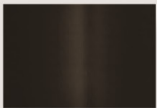
W13 Pearl Beige



W1 Yolk White



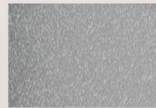
P0 Brass



Z1 Satin Bronze



Z3 Textured Bronze



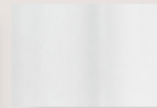
T4 Shimmer Gray



P2 Brushed Aluminum



W3 Textured White



W2 Gloss White



P1 Chrome



28435 Industry Drive., Valencia, California 91355
 West Coast Sales: 800-325-4448 / 661-257-0286 • fax 800-323-2346 / 661-257-0201
 East Coast Sales: 866-350-0991 • fax 866-490-5754
www.lightwayind.com • sales@lightwayind.com



REXW-LED

Construction:

- Steel housing and chassis
- Frameless white textured polycarbonate lens

Light Source:

- LED
- Dimming to 10% **Included**

Notes:

- Mounting - See notes below dimensions
- Horizontal or vertical mounting
- ADA compliant
- Optional battery backup
- UL and CUL listed DAMP location
- LED Components
 - Replaceable Module
 - CRI > 90
 - Universal 120/277 volt standard
 - 5-Year Warranty on LED Components



Type:	
Job Name:	



REXW-315	REXW-326	REXW-415	REXW-426
Height - 15"	Height - 26"	Height - 15"	Height - 26"
Width - 3"	Width - 3"	Width - 4.25"	Width - 4.25"
Depth - 4"	Depth - 4"	Depth - 4"	Depth - 4"

Mounts to 2 x 4 box/opening oriented to match fixture's linear dimension

Mounts to standard J box



ORDERING INFORMATION

Example: REXW-326-LED-O2C-4-T6-WTP

REXW

Size	LED					Kelvin	Cage	Finish	Diffuser	Options
		Watts	Source Lumens	Dimming	Energy Star	2 3000K 3 3500K 4 4000K		B1 Satin Black B2 Text Black Z1 Satin Bronze Z3 Text Bronze W1 Yolk White W2 Gloss White W3 Text White T4 Shimmer Gray M13 Anod Silver T6 Pewter W13 Pearl Beige Optional (See Price List) M17 Brass Powder P2 Brushed Alum P9 Brushed Nickel	WTP White Textured Polycarbonate Optional Lens Material (see Price List) AHA Amber Honey Alabaster BAA Beige Alabaster OAA Opal Alabaster	DIM LED dimming driver (0 - 10v) DIMLD Line Voltage /TRIAC/ELV/120v See Resource Page T24 Title 24/JA8 Compliant (F1Y configuration only) Battery Backup Options (415 & 426 Series only) BB10 10 Watts (1170lm) for 90-Minutes
315-LED	O1C	9	1210	0-10v	NO					
415-LED	O1C	9	1210	0-10v	NO					
326-LED	O2C	18	2420	0-10v	NO					
	F1Y	30	3235	TRIAC/ELV	YES					
426-LED	O2C	18	2420	0-10v	NO					
	F1Y	30	3235	TRIAC/ELV	YES					



28435 Industry Drive., Valencia, California 91355
 West Coast Sales: 800-325-4448 /661-257-0286 • fax 800-323-2346 /661-257-0201
 East Coast Sales: 866-350-0991 • fax 866-490-5754
 www.lightwayind.com • sales@lightwayind.com

