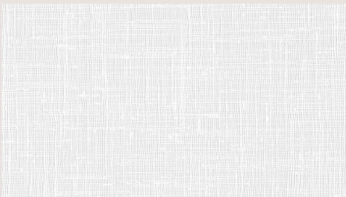


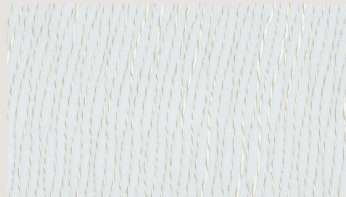
LDLC Series



Ceiling fixture is a LDLC
Wall Sconce is a BLDW



White Linen Acrylic (WLA)



Rapid Textured Acrylic (RTA)



Chocolate Textured Acrylic (CTA)



Black Linen Acrylic (BLA)



28435 Industry Drive., Valencia, California 91355
West Coast Sales: 800-325-4448 /661-257-0286 • fax 800-323-2346 /661-257-0201
East Coast Sales: 866-350-0991 • fax 866-490-5754
www.lightwayind.com • sales@lightwayind.com



Revision: 06/23/2022

LDLC-LED

Construction:

- Diffuser is white washable textured acrylic with a variety of side decorative Laminated Surface Diffusers

Light Source:

- LED
- Dimming to 10% **Included**

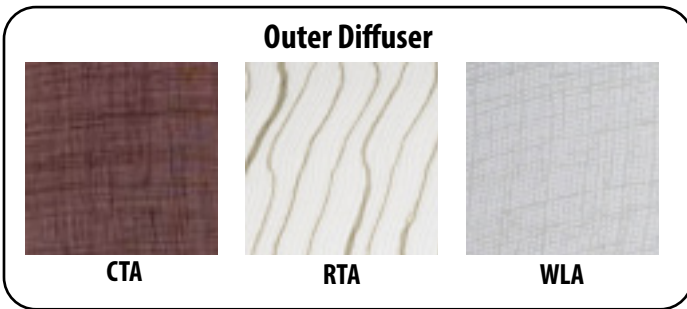
Notes:

- Keyhole slots for standard J-box
- Optional battery backup - Requires 1 3/4" extension ring (18" & 23" only)
- UL and CUL listed **DAMP** location
- LED Array
 - Replaceable Module
 - CRI > 90
 - Dimming (10% or 1%)
 - Universal 120/277 volt standard
 - 5-Year Warranty on LED Components

Type:	
Job Name:	



Shown with White Linen Acrylic (WLA)



	LDLC-16	LDLC-18	LDLC-23
Dia.	16"	18"	23"
Ht.	5 1/4"	5 1/4"	5 1/4"



ORDERING INFORMATION

Example: LDLC-18-LED-F1Q-4-WTA-TIA-DIM

LDLC

Size	LED					Kelvin	Cage	Inner Diffuser	Outer Diffuser	Options
		Watts	Source Lumens	Dimming	Energy Star					
16-LED	F1L	9	1400	0-10v	YES	2 3000K 3 3500K 4 4000K		WTA White Textured Acrylic	CTA Chocolate Textured Acrylic	DIM LED dimming driver (0 - 10v) DIMLD Line Voltage /TRIAC/ELV/120v ES Energy Star listed components T24 Title 24/JA8 Compliant (F10, F1P & F1Q configuration only) 42 Aluminum Pan (16" & 18" only) OCCHFA Concealed Occupancy Sensor <i>See Sensor Resource Sheet</i> Battery Backup Options <i>(Requires 1 3/4" extension ring)</i> LDLC-18 & 23 only <i>(Available with 0-10v only)</i> BB10 10 Watts (1170lm) for 90-Minutes
	F1O	10	863	TRIAC/ELV	YES					
	F1P	15	1361	TRIAC/ELV	YES					
	2E26		0	TRIAC/ELV	NO					
18-LED	F1K	13	2115	0-10v	YES			WLA White Linen Acrylic Optional Trim Options (Consult Factory) RTA Rapid Textured Acrylic BTA Black Textured Acrylic		
	F1P	15	1361	TRIAC/ELV	YES					
	F1Q	23	2057	TRIAC/ELV	YES					
	3E26		0	TRIAC/ELV	NO					
23-LED	L1A	36	4000	0-10v	NO					
	4E26		0	TRIAC/ELV	NO					



28435 Industry Drive., Valencia, California 91355
 West Coast Sales: 800-325-4448 / 661-257-0286 • fax 800-323-2346 / 661-257-0201
 East Coast Sales: 866-350-0991 • fax 866-490-5754
 www.lightwayind.com • sales@lightwayind.com

