

# PDLW-LED

## Construction:

- Steel housing and chassis
- Bottom lens is white frosted acrylic

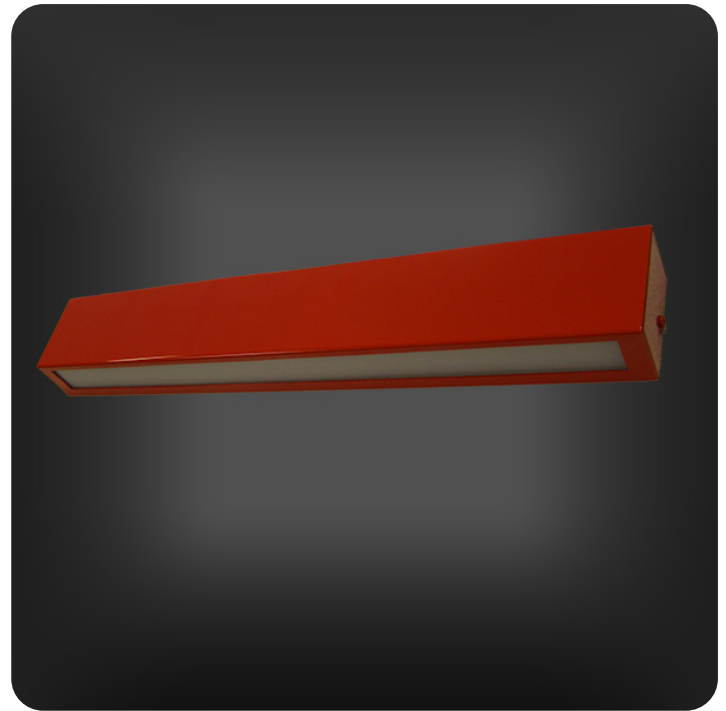
## Light Source:

- LED
- Dimming to 10% **Included**

## Notes:

- Dark sky compliant
- Wall mount only
- Down light only
- ADA Compliant
- Optional **LBC** large box cover to mount to standard extension box
- UL and CUL listed **WET** location
- LED Components
  - Replaceable Module
  - CRI > 90
  - Universal 120/277 volt standard
  - 5-Year Warranty on LED Components

Type:	
Job Name:	



### PDLW-24-LED

Height - 3"  
Width - 24"  
Depth - 2"

### PDLW-36-LED

Height - 3"  
Width - 36"  
Depth - 2"

### PDLW-47-LED

Height - 3"  
Width - 47"  
Depth - 2"

Mounts to 2 x 4 box/opening oriented to match  
fixture's linear dimension



## ORDERING INFORMATION

Example: **PDLW-36-LED-O3C-4-T4-WSA**

### PDLW

Size	LED					Kelvin	Cage	Finish	Diffuser	Options
		Watts	Source Lumens	Dimming	Energy Star					
24-LED	O2C	18	2420	0-10v	NO	2 3000K 3 3500K 4 4000K		<b>B1</b> Satin Black <b>B2</b> Text Black <b>Z1</b> Satin Bronze <b>Z3</b> Text Bronze <b>W1</b> Yolk White <b>W2</b> Gloss White <b>T4</b> Shimmer Gray <b>M13</b> Anod Silver <b>T6</b> Pewter <b>W13</b> Pearl Beige  <b>Optional</b> (See Price List) <b>M17</b> Brass Powder <b>P2</b> Brushed Alum <b>P9</b> Brushed Nickel	WFA White Frosted Acrylic	<b>LBC</b> Large box cover standard junction box (5" wide x 6" high)  <b>DIM</b> LED dimming driver (0 - 10v)  <b>Battery Backup Options</b> <b>BB10</b> Battery backup unit providing 8 Watts (1170lm) for 90-Minute
36-LED	O3C	27	3630	0-10v	NO					
47-LED	O4C	36	4840	0-10v	NO					



28435 Industry Drive., Valencia, California 91355  
 West Coast Sales: 800-325-4448 / 661-257-0286 • fax 800-323-2346 / 661-257-0201  
 East Coast Sales: 866-350-0991 • fax 866-490-5754  
 www.lightwayind.com • sales@lightwayind.com

