

# VTTV-LED

## Construction:

- Steel chassis and end caps
- Slit Design Front
- Diffuser is white smooth acrylic

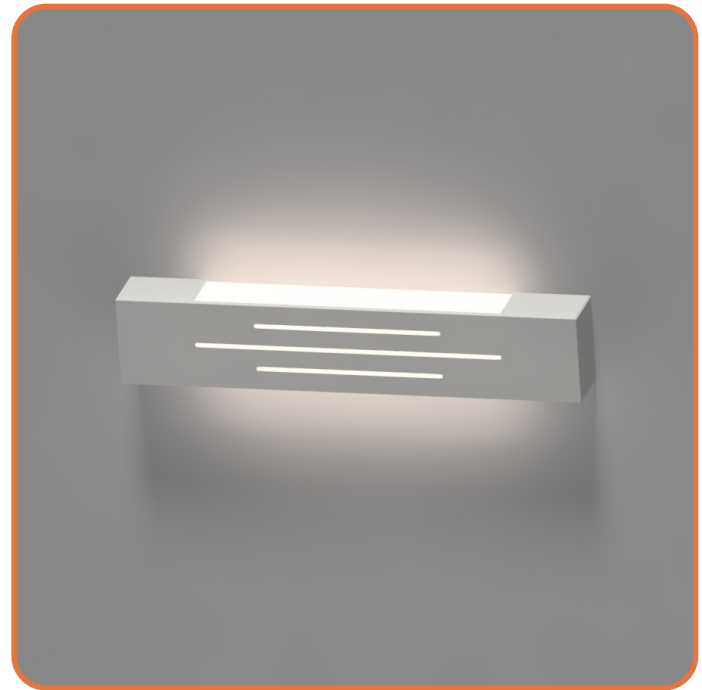
## Light Source:

- LED
- Dimming to 10% **Included**

## Notes:

- Mounts to standard J-Box with slotted anchor holes
- Optional battery backup
- Vertical or Horizontal mounting
- ADA compliant
- Optional independent nightlight circuit -Uplight only circuit
- UL and CUL listed **DAMP** location
- LED Components
  - Replaceable Module
  - CRI > 80
  - Universal 120/277 volt standard
  - 5-Year Warranty on LED Components

|           |  |
|-----------|--|
| Type:     |  |
| Job Name: |  |



Length - 24" - 36" - 48" - 60" - 72" - 96"

Height - 4 1/4"

Depth - 3"



## ORDERING INFORMATION

Example: VTTV-36-LED-O3B-2-W1-WSA

### VTTV

| Size   | LED | Watts | Source Lumens | Dimming   | Energy Star | Kelvin              | Cage | Finish   | Diffuser                 | Options   |  |  |
|--------|-----|-------|---------------|-----------|-------------|---------------------|------|--|--------------------------|---|--|--|
| 24-LED | O2B | 15    | 2000          | 0-10v     | NO          | 2 3000K<br>4 4000K  |      | B1 Satin Black<br>B2 Text Black<br>Z1 Satin Bronze<br>Z3 Text Bronze<br>W1 Yolk White<br>W2 Gloss White<br>W3 Text White<br>T4 Shimmer Gray<br>M13 Anod Silver<br>T6 Pewter<br>W13 Pearl Beige | WSA White Smooth Acrylic | <b>DIM</b> LED dimming driver (0 - 10v)<br><b>DIMLD</b> Line Voltage /TRIAC/ELV/120v<br>See Resource Page<br><br><b>ES</b> Energy Star listed components<br><b>T24</b> Title 24/JA8 Compliant<br>(F1Y configuration only)<br><br><b>90CRI</b> Consult Factory<br><br><b>OCCHFA</b> Concealed Occupancy Sensor<br>See Sensor Resource Sheet<br><br><b>Battery Backup Options</b><br>(Available with 0-10v only)<br><b>BB10</b> 10 Watts (1170lm) for 90-Minute |  |  |
|        | F1Y | 30    | 3235          | TRIAC/ELV | YES         |                     |      |  |                          |   |  |  |
| 36-LED | O3B | 22    | 3000          | 0-10v     | NO          | Optional<br>3 3500K |      |  |                          |   |  |  |
| 48-LED | O4B | 29    | 4000          | 0-10v     | NO          |                     |      |  |                          |   |  |  |
| 72-LED | O6C | 54    | 7260          | 0-10v     | NO          |                     |      |  |                          |   |  |  |
| 96-LED | O8C | 72    | 9680          | 0-10v     | NO          |                     |      |  |                          |   |  |  |
|        |     |       |               |           |             |                     |      | Optional<br>(See Price List)<br>M17 Brass Powder   |                          |   |  |  |



28435 Industry Drive., Valencia, California 91355  
 West Coast Sales: 800-325-4448 /661-257-0286 • fax 800-323-2346 /661-257-0201  
 East Coast Sales: 866-350-0991 • fax 866-490-5754  
 www.lightwayind.com • sales@lightwayind.com

