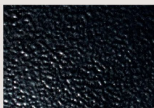


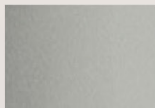
HPTW Series



B1 Satin Black



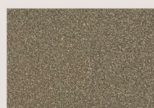
B2 Textured Black



M13 Anodized Silver



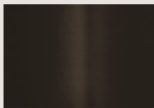
T6 Pewter



W13 Pearl Beige



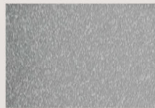
W1 Yolk White



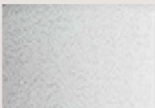
Z1 Satin Bronze



Z3 Textured Bronze



T4 Shimmer Gray



W3 Textured White



W2 Gloss White



28435 Industry Drive., Valencia, California 91355
 West Coast Sales: 800-325-4448 / 661-257-0286 • fax 800-323-2346 / 661-257-0201
 East Coast Sales: 866-350-0991 • fax 866-490-5754
www.lightwayind.com • sales@lightwayind.com



Revision: 06/20/2022

HPTW-LED

Construction:

- Steel housing and chassis
- Diffuser is .060" thick white textured polycarbonate

Light Source:

- LED
- Dimming to 10% **Included**

Notes:

- Keyhole slots or center lockup for standard J-box
- Custom cage styles available
- Open top and bottom
- Optional Battery Backup
- ADA compliant
- UL and CUL listed **DAMP** location
- LED Components
 - Replaceable Module
 - CRI > 90
 - Universal 120/277 volt standard
 - 5-Year Warranty on LED Components

Type:	
Job Name:	



HPTW-11-LED

Height - 11"
Width - 10"
Depth - 4"

HPTW-16-LED

Height - 15 1/2"
Width - 13 7/8"
Depth - 4"



ORDERING INFORMATION

Example: **HPTW-16-LED-1FH-4-B1-WTP**

HPTW

Size	LED					Kelvin	Cage	Finish	Diffuser	Options
		Watts	Source Lumens	Dimming	Energy Star					
11-LED	F1H	9	1400	0-10v	YES	2 3000K 3 3500K 4 4000K		B1 Satin Black M13 Anod Silver T4 Shimmer Gray T6 Pewter W2 Gloss White W1 Yolk White Z1 Satin Bronze Z3 Text Bronze	WTP White Textured Polycarbonate	DIM LED dimming driver (0 - 10v) DIMLD Line Voltage /TRIAC/ELV/120v See Resource Page ES Energy Star listed components T24 Title 24/JA8 Compliant (F10 & F1P configuration only) OCCHFB Concealed Occupancy Sensor (O2A Configuration Only) See Sensor Resource Sheet Battery Backup Options (Available with 0-10v only) BB10 10 Watts (1170lm) for 90-Minutes
	F1O	10	863	TRIAC/ELV	YES					
	F1P	15	1361	TRIAC/ELV	YES					
	O2A	12	1600	0-10v	NO					
	F1J	20	2820	0-10v	YES					
16-LED	F1H	9	1400	0-10v	YES					
	F1P	15	1361	TRIAC/ELV	YES		Optional Finishes (see Price List) M17 Brass Powder P2 Brushed Alum P9 Brushed Nickel			
	O2A	12	1600	0-10v	NO					
	O2C	18	2420	0-10v	NO					



28435 Industry Drive., Valencia, California 91355
 West Coast Sales: 800-325-4448 /661-257-0286 • fax 800-323-2346 /661-257-0201
 East Coast Sales: 866-350-0991 • fax 866-490-5754
 www.lightwayind.com • sales@lightwayind.com

