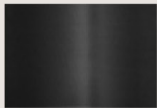
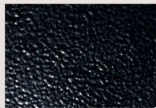


UDSW Series



B1 Satin
Black



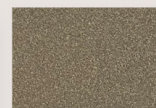
B2 Textured
Black



M13 Anodized
Silver



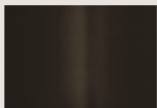
T6 Pewter



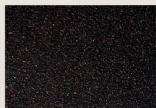
W13 Pearl
Beige



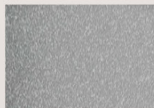
W1 Yolk White



Z1 Satin
Bronze



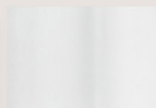
Z3 Textured
Bronze



T4 Shimmer
Gray



W3 Textured
White



W2 Gloss
White



28435 Industry Drive., Valencia, California 91355
800-325-4448 / 661-257-0286 • fax 800-323-2346 / 661-257-0201
www.lightwayind.com • sales@lightwayind.com



Revision: 11/14/2023

UDSW-LED

Construction:

- Steel housing and chassis
- Diffuser is .10" thick extruded white acrylic
- Accent rings are extruded aluminum

Light Source:

- LED
- Dimming to 10% **Included**

Notes:

- Integral mounting plate; keyhole slots
- Top and bottom clear acrylic lens - standard
- Custom cage styles (X) available
- UL and CUL listed **WET** location
- LED Components
 - Replaceable Module
 - CRI > 90
 - Universal 120/277 volt standard
 - 5-Year Warranty on LED Components

Type:	
Job Name:	



UDSW-9-LED

Height - 9"
Width - 11 1/2"
Depth - 6 1/2"
MC - 3 1/4"

UDSW-11-LED

Height - 11"
Width - 11 1/2"
Depth - 6 1/2"
MC - 5 1/2"



ORDERING INFORMATION

Example: UDSW-9-LED-F1P-4-Z3-WSA

UDSW

Size	LED					Kelvin	Cage	Finish	Diffuser	Options
		Watts	Source Lumens	Dimming	Energy Star					
9-LED	O2A	12	1600	0-10v	NO	2 3000K	A	B1 Satin Black	WSA White Smooth Acrylic	DIM LED dimming driver (0 - 10v)
	O4A	24	3200	0-10v	NO	3 3500K	B	B2 Text Black		
						4 4000K	X	Z1 Satin Bronze Z3 Text Bronze W1 Yolk White W2 Gloss White T4 Shimmer Gray M13 Anod Silver T6 Pewter W13 Pearl Beige		
11-LED	O2A	12	1600	0-10v	NO			Optional (See Price List)		Battery Backup Options (Available with 0-10v only) (UDSW-11 only) BB10 10 Watts (1170lm) for 90-Minutes
	O4A	24	3200	0-10v	NO			M17 Brass Powder		



28435 Industry Drive., Valencia, California 91355
800-325-4448 / 661-257-0286 • fax 800-323-2346 / 661-257-0201
www.lightwayind.com • sales@lightwayind.com

