

BRCC-LED

Construction:

- Die cast body and lens trim
- White smooth polycarbonate diffuser

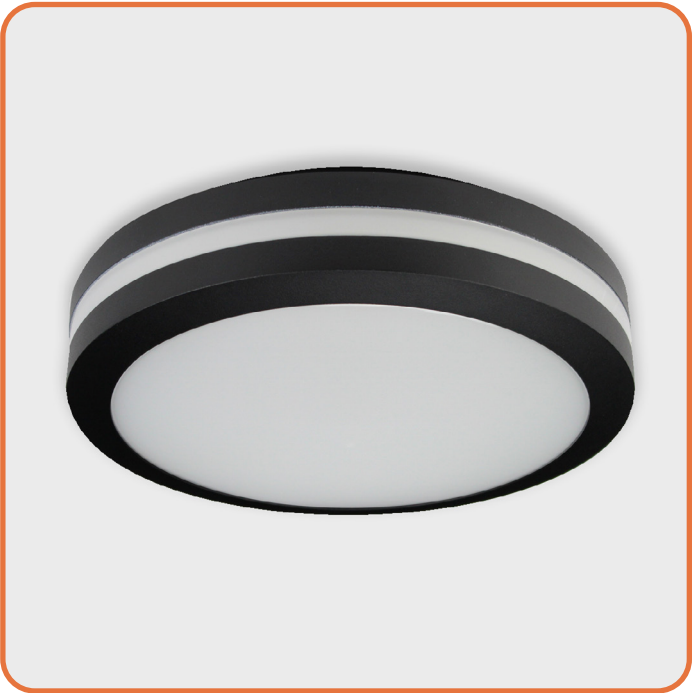
Light Source:

- LED
- Dimming to 10% **Included**

Notes:

- Keyhole slots for standard J-box
- Wall or ceiling mount
- UL and CUL listed **WET** location
- LED Components
 - Replaceable Module
 - CRI > 90
 - Universal 120/277 volt standard
 - 5-Year Warranty on LED Components

Type:	
Job Name:	



BRCC-12-LED

Height - 3"
Diameter - 12"



ORDERING INFORMATION

Example: BRCC-12-LED-F1P-4-B99-WSP

BRCC

Size	LED					Kelvin	Cage	Finish	Diffuser	Options
		Watts	Source Lumens	Dimming	Energy Star					
12-LED	F1L	9	1400	0-10v	YES	2 3000K 3 3500K 4 4000K		B99 Black W99 White Optional (See Price List) W1 York T4 Shimmer Gray M13 Anod Silver T6 Pewter W13 Pearl Beige Z1 Satin Bronze Z3 Text Bronze	WSP White Smooth Polycarbonate	DIM LED dimming driver (0 - 10v) DIMLD Line Voltage /TRIAC/ELV/120v See Resource Page ES Energy Star listed components T24 Title 24/JA8 Compliant (F10, F1P & F1Q configuration only) Optional Voltage -347V Input voltage to 347v OCCHFA Concealed Occupancy Sensor See Sensor Resource Sheet
	F1O	10	863	TRIAC/ELV	YES					
	F1P	15	1361	TRIAC/ELV	YES					
	F1K	13	2115	0-10v	YES					
	F1Q	23	2057	TRIAC/ELV	YES					



28435 Industry Drive., Valencia, California 91355
West Coast Sales: 800-325-4448 / 661-257-0286 • fax 800-323-2346 / 661-257-0201
www.lightwayind.com • sales@lightwayind.com

