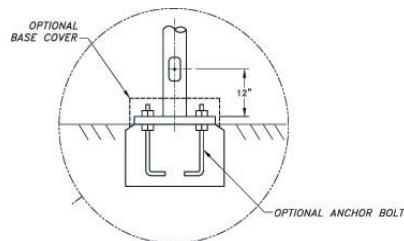
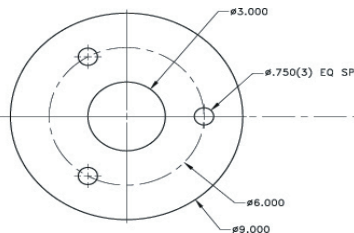
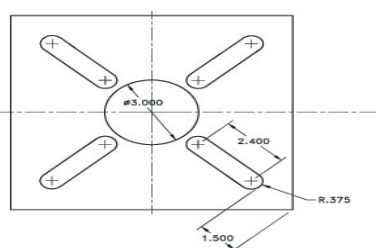


## Notes:

- Round, steel, seamless, Wall thickness - 14-gauge (.065")
- Nominal dimensions:
  - O.D. - 3.04"
  - I.D. - 2.88"
  - Available in 8', 10', 12' and custom lengths
- Flange Bases
  - 1/4" steel plate with slots for anchor bolts
  - Round - 9" diameter (3 anchor bolt attachment)
  - Square - 9" square (4 anchor bolt attachment)
- **Decorative Covers** (Optional)
  - Steel decorative covers attach to flange base (round or square)
- **Anchor Bolt Set** (Optional)
  - Consists of hex nut, washer and anchor bolt (3/8" diameter X 9 1/2" long with 1 1/4" thread)
- **Hand Hole** (Optional)
  - For flange base attachment only, hand hole is 12" above base with gasket and cover
- **Installation** (consult local building code)
  - Direct burial - typically 2-feet set in concrete
  - Flange base - mounts to concrete footing
  - Templates - consult factory

Type:	
Job Name:	



WALL

CEILING

PENDANT

OUTDOOR

## ORDERING INFORMATION

	Discription	Direct Buried	Anchor Bolts	Base Cover	Finish	Options
-81	10 foot pole round, 3 inch OD steel	Yes	N/A	N/A	<b>B1</b> Satin Black	<b>-BH</b> Bullhead
-82	12 foot pole round, 3 inch OD steel	Yes	N/A	N/A	Optional Finishes See color chart Consult Factory for Pricing	<b>-88</b> Base Cover
-193	15 foot pole round, 3 inch OD steel	Yes	N/A	N/A		<b>-89</b> Set of 3 anchor bolts
-86	8 foot pole round, 3 inch OD, steel with 9 inch round base	No	3	RD		<b>-90</b> Set of 4 anchor bolts
-91	10 foot pole round, 3 inch OD, steel with 9 inch round base	No	3	RD		<b>-99</b> Custom length, diameter or configuration
-194	12 foot pole round, 3 inch OD, steel with 9 inch round base	No	3	RD		
-196	15 foot pole round, 3 inch OD, steel with 9 inch round base	No	3	RD		
-87	8 foot pole round, 3 inch OD, steel with 9 inch square base	No	4	SQ	Consult factory for pricing	
-92	10 foot pole round, 3 inch OD, steel with 9 inch square base	No	4	SQ		
-195	12 foot pole round, 3 inch OD, steel with 9 inch square base	No	4	SQ		

