

# VERW-LED

## Construction:

- Steel housing and chassis
- Diffuser is .060" thick white textured polycarbonate

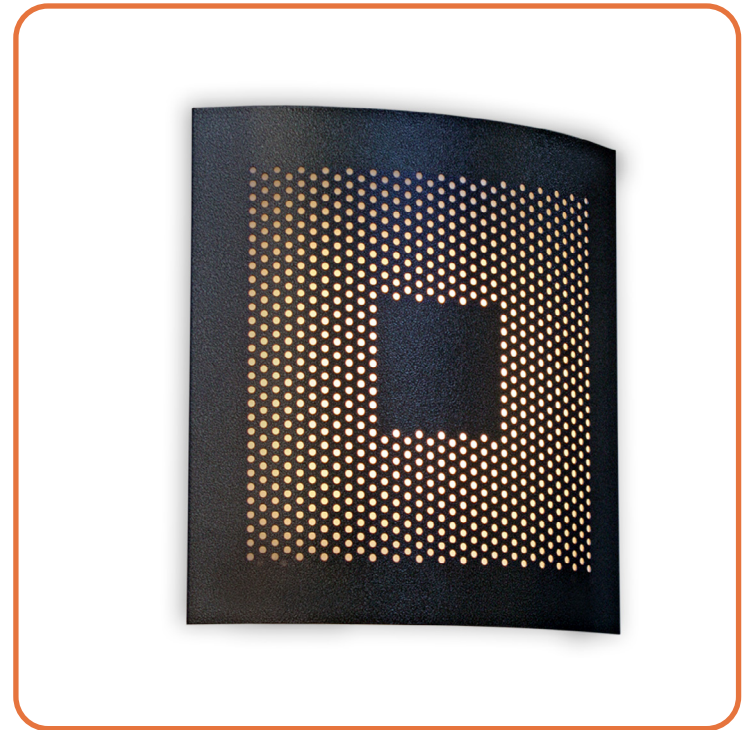
## Light Source:

- LED
- Dimming to 10% **Included**

## Notes:

- Center lockup – hardware included
- Custom cage styles available
- Open top and bottom for up and down light
- ADA compliant
- Optional Battery Backup
- UL and CUL listed **DAMP** location
- LED Components
  - Replaceable Module
  - CRI > 80
  - Universal 120/277 volt standard
  - 5-Year Warranty on LED Components

Type:	
Job Name:	



## VERW-12

Height - 11 3/8"  
 Width - 11"  
 Depth - 4"



## ORDERING INFORMATION

Example: VERW-12-LED-F1P-4-Z3-WTP

## VERW

Size	LED					Kelvin	Cage	Finish	Diffuser	Options
		Watts	Source Lumens	Dimming	Energy Star	2 3000K 4 4000K		<b>B1</b> Satin Black <b>B2</b> Text Black <b>Z1</b> Satin Bronze <b>Z3</b> Text Bronze <b>W1</b> Yolk White <b>W2</b> Gloss White <b>T4</b> Shimmer Gray <b>M13</b> Anod Silver <b>T6</b> Pewter <b>W13</b> Pearl Beige	<b>WTP</b> White Textured Polycarbonate	<b>DIM</b> LED dimming driver (0 - 10v) <b>DIMLD</b> Line Voltage /TRIAC/ELV/120v See Resource Page  <b>ES</b> Energy Star listed components <b>90CRI</b> Consult Factory  <b>21</b> Photocell - See Notes -01 120 volt -02 277 volt  <b>OCCHFB</b> Concealed Occupancy Sensor (02A Configuration Only) See Sensor Resource Sheet  <b>Battery Backup Options</b> (Available with 0-10v only) <b>BB10</b> 10 Watts (1170lm) for 90-Minutes
<b>12-LED</b>	<b>F1H</b>	9	1400	0-10v	YES	<b>Optional</b> 3 3500K	<b>Optional</b> (See Price List) <b>M17</b> Brass Powder <b>M16</b> Antique Brass <b>P2</b> Brushed Alum <b>P9</b> Brushed Nickel			
	<b>F10</b>	10	863	TRIAC/ELV	YES					
	<b>O2A</b>	12	1600	0-10v	NO					
	<b>F1P</b>	15	1361	TRIAC/ELV	YES					



28435 Industry Drive., Valencia, California 91355  
 West Coast Sales: 800-325-4448 / 661-257-0286 • fax 800-323-2346 / 661-257-0201  
 East Coast Sales: 866-350-0991 • fax 866-490-5754  
 www.lightwayind.com • sales@lightwayind.com

