

SLMW-LED

Construction:

- Steel housing and chassis
- Diffuser is white textured polycarbonate
- Optional alabaster acrylic or laminated linen lenses

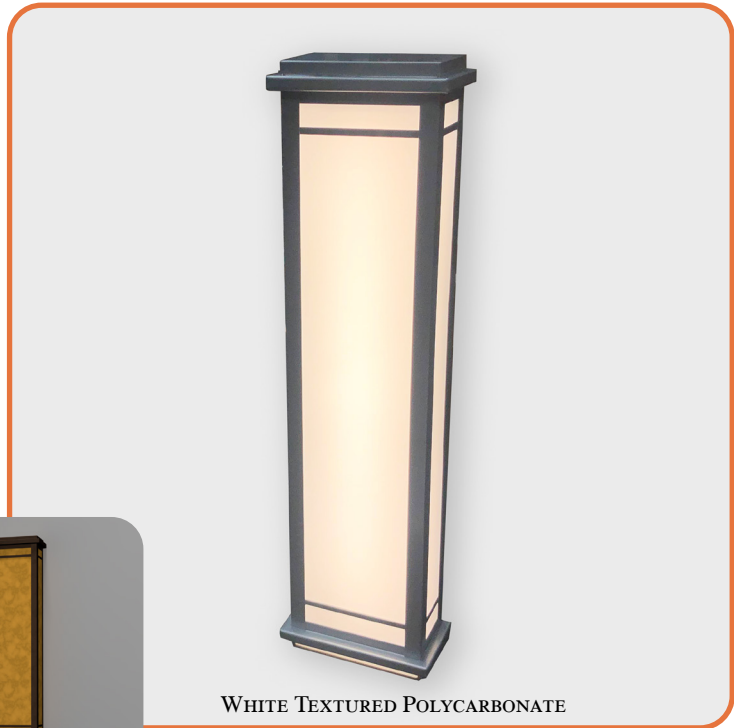
Light Source:

- LED
- Dimming

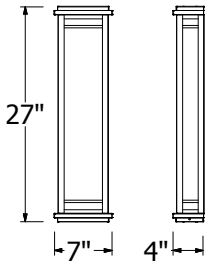
Notes:

- Mounting hardware included
- Optional bottom lens available
- Closed top eliminates upward light pollution
- Optional photocell (option 21) – specify voltage
- UL and CUL listed **WET** location
- LED Components
 - Replaceable Module
 - CRI > 90
 - Universal 120/277 volt standard
 - 5-Year Warranty on LED Components

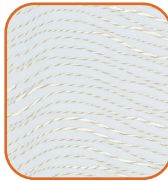
Type:	
Job Name:	



WHITE TEXTURED POLYCARBONATE



WHITE LIN-



RAPID TEXTURED



OPTIONAL AHA LENS



ORDERING INFORMATION

Example: SLMW-27-LED-O2C-2-Z3-WTP

SLMW

Size	LED					Kelvin	Cage	Finish	Diffuser	Options
		Watts	Source Lumens	Dimming	Energy Star					
27-LED	O2C	18	2420	0-10v	NO	2 3000K 3 3500K 4 4000K		B1 Satin Black B2 Text Black Z1 Satin Bronze Z3 Text Bronze W1 Yolk White W2 Gloss White W3 Text White T4 Shimmer Gray M13 Anod Silver T6 Pewter W13 Pearl Beige Optional (See Price List) M17 Brass Powder	WTP White Textured Polycarbonate Optional Lens Material (See Price List) AHA Amber Honey Alabaster BAA Beige Alabaster OAA Opal Alabaster WSP White Smooth Polycarbonate Optional Lens Material (See Price List) (Damp application only) WLA White Linen Acrylic RTA Rapid Textured Acrylic	DIM LED dimming driver (0 - 10v) 16 Bottom Lens 21 Photocell - See Notes -01 120 volt -02 277 volt Battery Backup Options (Available with 0-10v only) BB10 10 Watts (1170lm) for 90-Minutes
	O4C	36	4840	0-10v	NO					



28435 Industry Drive., Valencia, California 91355
 West Coast Sales: 800-325-4448 / 661-257-0286 • fax 800-323-2346 / 661-257-0201
 East Coast Sales: 866-350-0991 • fax 866-490-5754
 www.lightwayind.com • sales@lightwayind.com

