

# ADMV-LED

Type:	
Job Name:	

## Construction:

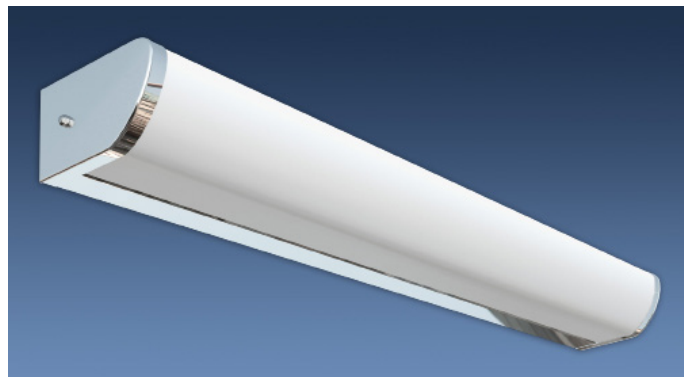
- Steel chassis
- Diffuser is white smooth acrylic with steel end caps

## Light Source:

- LED
- Dimming to 10% **Included**

## Notes:

- Mounts to standard J-Box with slotted anchor holes
- Optional battery backup
- UL and CUL listed **DAMP** location
- LED Components
  - Replaceable Module
  - CRI > 80
  - Universal 120/277 volt standard
  - 5-Year Warranty on LED Components



### ADMV-24

Height - 3 1/4"  
Depth - 5 1/4"  
Length - 24 1/4"

### ADMV-36

Height - 3 1/4"  
Depth - 5 1/4"  
Length - 36 1/4"

### ADMV-48

Height - 3 1/4"  
Depth - 5 1/4"  
Length - 48 1/4"



## ORDERING INFORMATION

Example: ADMV-36-LED-O3C-2-P1-WSA

## ADMV

Size	LED					Kelvin	Cage	Finish	Diffuser	Options
		Watts	Source Lumens	Dimming	Energy Star	2 3000K 4 4000K		W2 Gloss White	WSA White Smooth Acrylic	<b>DIM</b> LED dimming driver (0 - 10v) <b>DIMLD</b> Line Voltage /TRIAC/ELV/120v Consult Factory
24-LED	O2C	18	2420	0-10v	NO	Optional 3 3500K		Optional (See Price List)	P1 Chrome	90CRI Consult Factory
36-LED	O3C	27	3630	0-10v	NO					
48-LED	O4C	36	4840	0-10v	NO					
<p><b>Battery Backup Options</b> (Available with 0-10v only) <b>BB10</b> 10 Watts (1170lm) for 90-Minute</p>										



28435 Industry Drive., Valencia, California 91355  
West Coast Sales: 800-325-4448 / 661-257-0286 • fax 800-323-2346 / 661-257-0201  
East Coast Sales: 866-350-0991 • fax 866-490-5754  
www.lightwayind.com • sales@lightwayind.com

