

# VTLV-LED

## Construction:

- Steel chassis and end caps
- Diffuser is white smooth acrylic

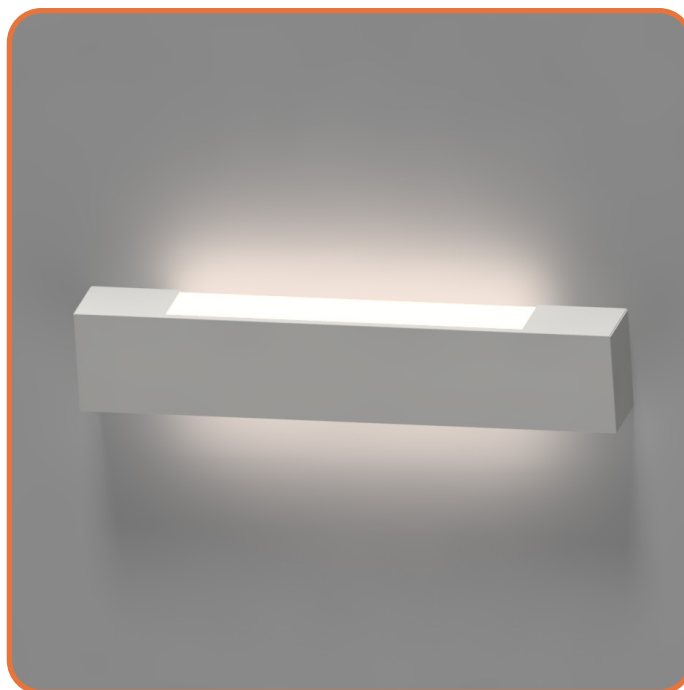
## Light Source:

- LED
- Dimming to 10% **Included**

## Notes:

- Mounts to standard J-Box with slotted anchor holes
- Optional battery backup)
- Vertical or Horizontal mounting
- ADA compliant
- Optional independent nightlight circuit -Uplight only circuit
- UL and CUL listed **DAMP** location
- LED Components
  - Replaceable Module
  - CRI > 80
  - Universal 120/277 volt standard
  - 5-Year Warranty on LED Components

Type:	
Job Name:	



Length - 24" - 36" - 48" - 60" - 72" - 96"

Height - 4 1/4"

Depth - 3"



## ORDERING INFORMATION

Example: VTLV-36-LED-O3B-2-W1-WSA

VTLV

Size	LED					Kelvin	Cage	Finish	Diffuser	Options
		Watts	Source Lumens	Dimming	Energy Star					
24-LED	O2B	15	2000	0-10v	NO	2 3000K 4 4000K		B1 Satin Black B2 Text Black Z1 Satin Bronze Z3 Text Bronze W1 Yolk White W2 Gloss White W3 Text White T4 Shimmer Gray M13 Anod Silver T6 Pewter W13 Pearl Beige	WSA White Smooth Acrylic	DIM LED dimming driver (0 - 10v) DIMLD Line Voltage /TRIAC/ELV/120v See Resource Page
	F1Y	30	3235	TRIAC/ELV	YES					
36-LED	O3B	22	3000	0-10v	NO	Optional 3 3500K		W13 Pearl Beige  Optional (See Price List) M17 Brass Powder	WSA White Smooth Acrylic	ES Energy Star listed components T24 Title 24/JA8 Compliant (F1Y configuration only)  90CRI Consult Factory  OCCHFA Concealed Occupancy Sensor See Sensor Resource Sheet  Battery Backup Options (Available with 0-10v only) BB10 10 Watts (1170lm) for 90-Minute
48-LED	O4B	29	4000	0-10v	NO					
72-LED	O6C	54	7260	0-10v	NO					
96-LED	O8C	72	9680	0-10v	NO					



28435 Industry Drive., Valencia, California 91355  
 West Coast Sales: 800-325-4448 /661-257-0286 • fax 800-323-2346 /661-257-0201  
 East Coast Sales: 866-350-0991 • fax 866-490-5754  
 www.lightwayind.com • sales@lightwayind.com



Revision: 06/04/2021