

Construction:

- Faux wood side diffuser, available with non-translucent or semi-translucent lens options, designed to suit a variety of aesthetic and functional design intents.
- The light distribution is set at 10% upward and 90% downward, with minimal to no side light transmission, depending on the selected diffuser.
- Bottom Diffuser is a White Textured Acrylic
- The fixture is constructed from durable steel and feature a sleek powder-coated finish for added protection and style with and Acrylic lens.

Light Source:

- LED
- Incandescent socket base

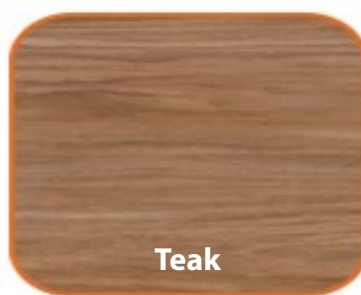
Notes:

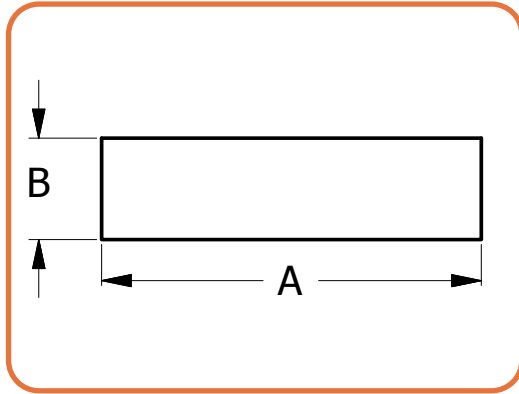
- Mounting Kit Included for standard J-box
- Custom overall heights available
- Finish options applies only with optional battery backup extension ring
- **Build America, Buy America Act Compliant**
- UL and CUL listed **DAMP** location
- LED Array
 - Replaceable Module
 - CRI > 90
 - Dimming (10% or 1%)
 - Universal 120/277 volt standard
 - 5-Year Warranty on LED Components
- For a pendant mounted version see the **LCVH**

Type:	
Job Name:	



DIFFUSER OPTIONS





For pendant mount version see LCVH



	DIM 'A'	DIM 'B'
LCVC-12	12.25"	4.5"
LCVC-15	15"	4.5"
LCVC-19	19"	5.25"
LCVC-24	24"	8"
LCVC-30	30"	8"
LCLC-36	36"	8"



Shown with optional battery back, adds 1 3/4" to fixture height

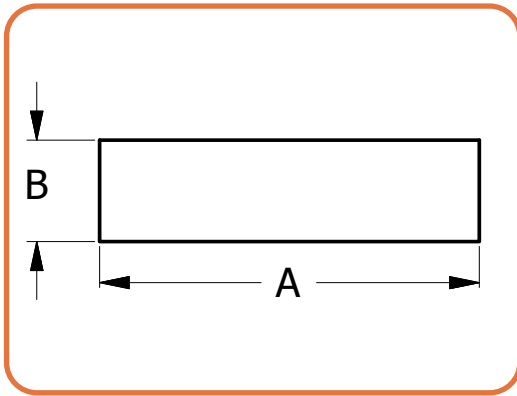
LED BASED ORDERING INFORMATION

Example: LCVC-15-LED-F1P-4-DV3-DIM

LCVC

Size	LED	Watts	Source Lumens	Dimming	Energy Star	Kelvin	Finish	Side Diffusers	Options	
12-LED	F1L	9	1400	0-10v	YES	1 2700K	(See Notes)	Maple DV1 Opaque Maple DT1 Semi-Translucent Maple Bamboo DV2 Opaque Bamboo DT2 Semi-Translucent Bamboo Teak DV3 Opaque Teak DT3 Semi-Translucent Teak Walnut DV4 Opaque Walnut DT4 Semi-Translucent Walnut	DIM LED dimming driver (0 - 10v) DIMLD Line Voltage /TRIAC/ELV/120v See Resource Page ES Energy Star listed components T24 Title 24/JA8 Compliant (F10, F1P & F1Q configuration only) CF - Center Finial OCCHFA Concealed Occupancy Sensor See Sensor Resource Sheet Battery Backup Options (Requires 1 3/4" extension ring) Note available in LCVC-12 BB10 10 Watts (1170lm) for 90-Minutes	
	F1O	10	863	TRIAC/ELV	YES	2 3000K	B1 Satin Black			
	F1P	15	1361	TRIAC/ELV	YES	3 3500K	B2 Text Black			
	15-LED	F1K	13	2115	0-10v	YES	4 4000K			Z1 Satin Bronze
		F1P	15	1361	TRIAC/ELV	YES	5 5000K			Z3 Text Bronze
19-LED	F1Q	23	2057	TRIAC/ELV	YES		W1 Yolk White			
	F1P	15	1361	TRIAC/ELV	YES		W2 Gloss White			
24-LED	F1Q	23	2057	TRIAC/ELV	YES		T4 Shimmer Gray			
	F1Q	23	2057	TRIAC/ELV	YES		M13 Anod Silver			
30-LED	L1A	36	4000	0-10v	NO		T6 Pewter			
	F1Q	23	2057	TRIAC/ELV	YES		W13 Pearl Beige			
36-LED	L1A	36	4000	0-10v	NO		Optional (See Price List)			
	O4C	36	4840	0-10v	NO		M17 Brass Powder			
36-LED	O8C	72	9680	0-10v	NO					
	O12C	107	14520	0-10v	NO					





For pendant mount version see LCVH



	DIM 'A'	DIM 'B'
LCVC-12	12.25"	4.5"
LCVC-15	15"	4.5"
LCVC-19	19"	5.25"
LCVC-24	24"	8"
LCVC-30	30"	8"
LCLC-36	36"	8"

INCANDESCENT BASED ORDERING INFORMATION

Example: LCVC-36-8E26-NL-DV3

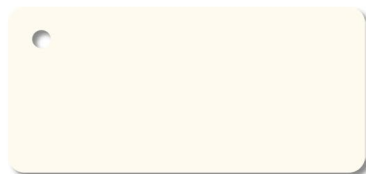
LCVC

NL

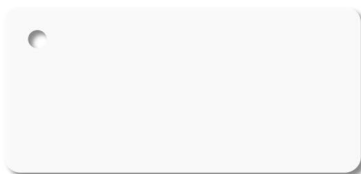
Size	Socket	Watts	Source Lumens	Dimming	Energy Star	Kelvin	Side Diffusers	Options
12	2E26			TRIAC/ELV		NL Lamps provided by others	Maple DV1 Opaque Maple DT1 Semi-Translucent Maple Bamboo DV2 Opaque Bamboo DT2 Semi-Translucent Bamboo Teak DV3 Opaque Teak DT3 Semi-Translucent Teak Walnut DV4 Opaque Walnut DT4 Semi-Translucent Walnut	CF - Center Finial
15	2E26			TRIAC/ELV				
19	3E26			TRIAC/ELV				
24	4E26			TRIAC/ELV				
30	8E26			TRIAC/ELV				
36								



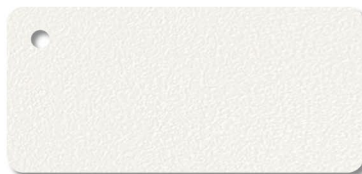
Standard Finishes



W1 Yolk



W2 Gloss White



W3 Textured White



W13 Pearl Beige



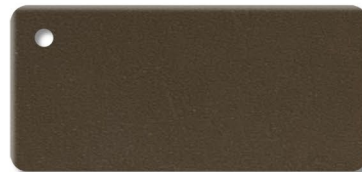
B1 Satin Black



B2 Textured Black



Z3 Textured Bronze



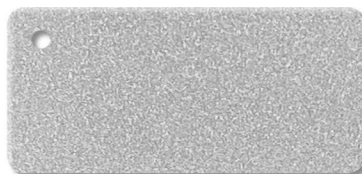
Z1 Satin Bronze



M13 Anodized Silver



T4 Shimmer Gray



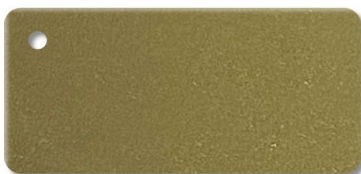
T6 Pewter



T1 Silver Gray



T5 Textured Silver



M17 Brass Powder

Premium Finishes - Contact Factory For Pricing



U12 Parkers Blue



U13 Cornflower Blue



A15 Medium Gray



G13 Sage Green



W18 Sand Fossil



R4 Deep Red



M20 Tuscan Sun



D12 Butterscotch

DISCLAIMER:

Colors displayed on your screen may vary slightly from the actual product color due to differences in monitor calibration and lighting conditions. Sample chips are available upon request. **Not all finishes are available with all fixtures. Please consult factory for premium finishes.**



28435 Industry Drive., Valencia, California 91355
800-325-4448 / 661-257-0286 • fax 800-323-2346 / 661-257-0201
www.lightwayind.com • sales@lightwayind.com

