

HPNW-LED

Construction:

- Steel housing, chassis and shield

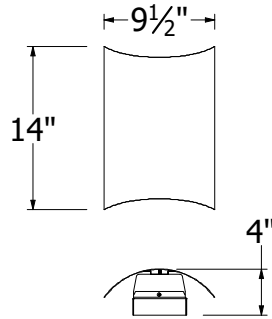
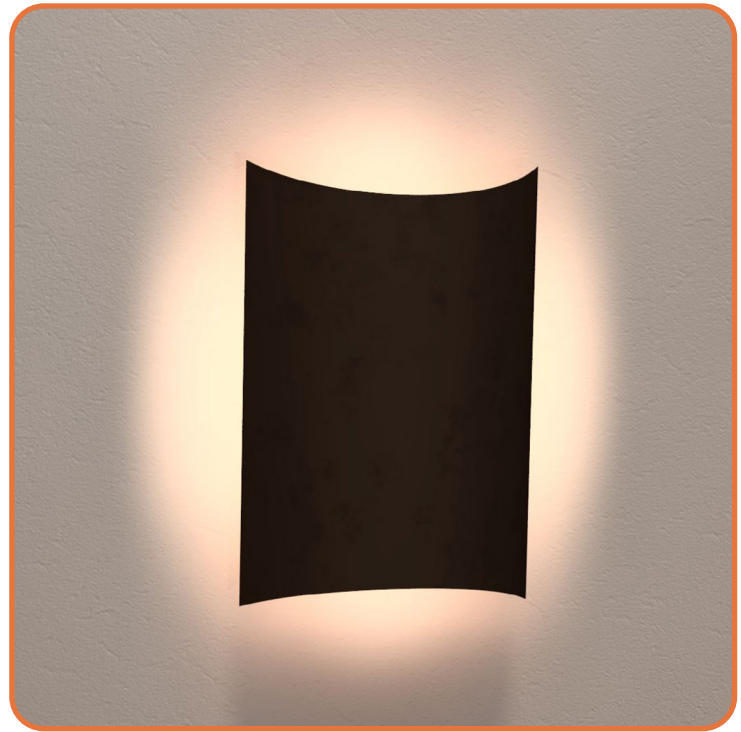
Light Source:

- LED
- Dimming to 10% **Included**

Notes:

- Center lockup – hardware include
- ADA Compliant
- UL and CUL listed **WET** location
- LED Components
 - Replaceable Module
 - CRI > 90
 - Universal 120/277 volt standard
 - 5-Year Warranty on LED Components

Type:	
Job Name:	



HPNW-14

Height - 14"

Width - 9 1/2"

Depth - 4"



ORDERING INFORMATION

Example: HPNW-14-LED-O2A-3-W1

HPNW

Size	LED					Kelvin	Cage	Finish	Diffuser	Options
		Watts	Source Lumens	Dimming	Energy Star	2 3000K 3 3500K 4 4000K		B1 Satin Black B2 Text Black Z1 Satin Bronze Z3 Text Bronze W1 Yolk White W2 Gloss White T4 Shimmer Gray M13 Anod Silver T6 Pewter W13 Pearl Beige Optional (See Price List) M17 Brass Powder P2 Brushed Alum P9 Brushed Nickel	None - steel shield	DIM LED dimming driver (0 - 10v)
14-LED	O2A	12	1600	0-10v	NO					



28435 Industry Drive., Valencia, California 91355
 West Coast Sales: 800-325-4448 / 661-257-0286 • fax 800-323-2346 / 661-257-0201
 East Coast Sales: 866-350-0991 • fax 866-490-5754
 www.lightwayind.com • sales@lightwayind.com

