



### Versatile ADA-Compliant Wall Sconce

Featuring a **double solid accent bar**, available in **24 optional finishes**, this elegant wall sconce lets you customize with **bonded linen**, **faux wood**, or a **limitless array of colored lenses**. Designed for **damp-listed** environments, it offers versatility for a range of applications. Optional features include **integral battery backup** and **occupancy sensor** for enhanced functionality.

Proudly **handcrafted in the United States**, this fixture complies with **Buy American, Build America (BABA) standards**, ensuring quality and accountability.



28435 Industry Drive., Valencia, California 91355  
800-325-4448 / 661-257-0286 • fax 800-323-2346 / 661-257-0201  
[www.lightwayind.com](http://www.lightwayind.com) • [sales@lightwayind.com](mailto:sales@lightwayind.com)



# LCBW-LED

## Construction:

- Steel housing and chassis
- Acrylic diffuser.

## Light Source:

- LED
- Dimming to 10% **Included**

## Notes:

- Keyhole slots or center lockup for standard J-box
- Custom cage styles available
- Open top and bottom
- Optional Battery Backup
- ADA compliant
- **Build America, Buy America Act Compliant**
- UL and CUL listed **DAMP** location
  - CRI > 90
  - Universal 120/277 volt standard
  - 5-Year Warranty on LED Components

Type:

Job Name:



### LCBW-11

Height - 11"

Width - 10"

Depth - 4"

### LCBW-16

Height - 15 1/2"

Width - 13 7/8"

Depth - 4"

## ORDERING INFORMATION

Example: **LCBW-16-LED-1FH-4-B1-WLA**

### LCBW

Size	LED					Kelvin	Cage	Finish	Diffuser	Options
		Watts	Source Lumens	Dimming	Energy Star					
<b>11-LED</b>	<b>F1H</b>	9	1400	0-10v	YES	2 3000K 3 3500K 4 4000K		<b>See Finish Options Page 3</b>	<b>Diffuser options See page 4 - 5</b>	<b>DIM</b> LED dimming driver (0 - 10v) <b>DIMLD</b> Line Voltage /TRIAC/ELV/120v See Resource Page  <b>ES</b> Energy Star listed components <b>T24</b> Title 24/JA8 Compliant (F10 & F1P configuration only)  <b>OCCHFB</b> Concealed Occupancy Sensor <i>(02A Configuration Only)</i> See Sensor Resource Sheet  <b>Battery Backup Options</b> <i>(Available with 0-10v only)</i> <b>BB10</b> 10 Watts (1170lm) for 90-Minutes
	<b>F1O</b>	10	863	TRIAC/ELV	YES					
	<b>F1P</b>	15	1361	TRIAC/ELV	YES					
	<b>O2A</b>	12	1600	0-10v	NO					
	<b>F1J</b>	20	2820	0-10v	YES					
<b>16-LED</b>	<b>F1H</b>	9	1400	0-10v	YES					
	<b>F1P</b>	15	1361	TRIAC/ELV	YES					
	<b>O2A</b>	12	1600	0-10v	NO					
	<b>O2C</b>	18	2420	0-10v	NO					



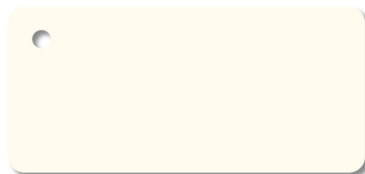
28435 Industry Drive., Valencia, California 91355  
 800-325-4448 / 661-257-0286 • fax 800-323-2346 / 661-257-0201  
 www.lightwayind.com • sales@lightwayind.com



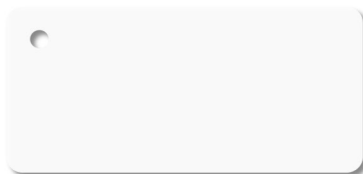
Revision: 06/03/2025



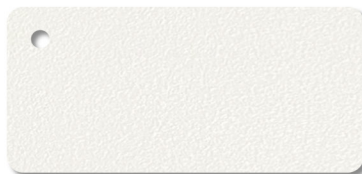
## Standard Finishes



W1 Yolk



W2 Gloss White



W3 Textured White



W13 Pearl Beige



B1 Satin Black



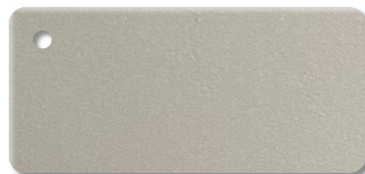
B2 Textured Black



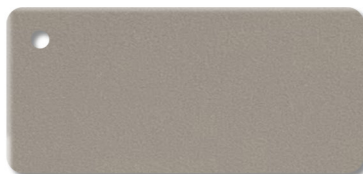
Z3 Textured Bronze



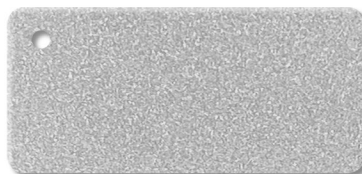
Z1 Satin Bronze



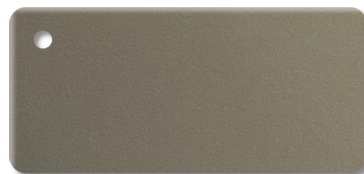
M13 Anodized Silver



T4 Shimmer Gray



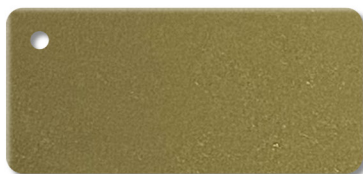
T6 Pewter



T1 Silver Gray



T5 Textured Silver



M17 Brass Powder

## Premium Finishes - Contact Factory For Pricing



U12 Parkers Blue



U13 Cornflower Blue



A15 Medium Gray



G13 Sage Green



W18 Sand Fossil



R4 Deep Red



M20 Tuscan Sun



D12 Butterscotch



P2 Brushed Aluminum



P9 Brushed Nickel

### DISCLAIMER:

Colors displayed on your screen may vary slightly from the actual product color due to differences in monitor calibration and lighting conditions. Sample chips are available upon request. **Not all finishes are available with all fixtures. Please consult factory for premium finishes.**

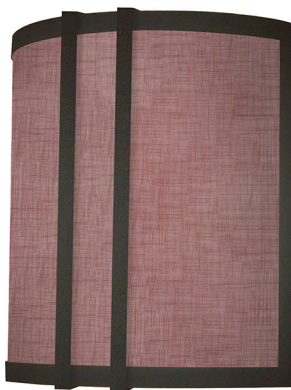


# DIFFUSER COLORS

## Linen Diffuser



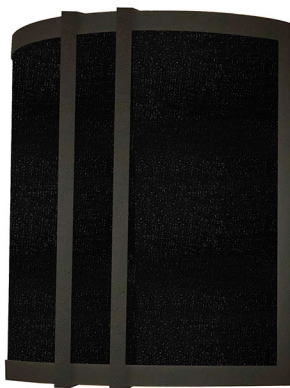
White Linen (WLA)



Chocolate Textured (CTA)



Rapid Textured (RTA)

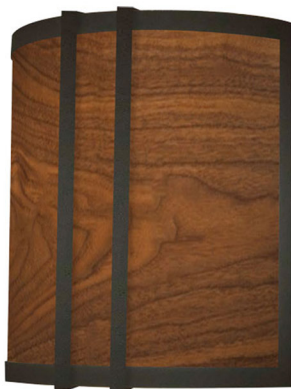


Black Linen (BLA)



Sable Linen (SLA)

## Wood Diffuser



Walnut (DT4)



Teak (DT3)



Bamboo (DT2)



Maple (DT1)

***Custom lens colors available, contact factory with Pantone or HEX code***

### **DISCLAIMER:**

Colors displayed on your screen may vary slightly from the actual product color due to differences in monitor calibration and lighting conditions. Sample chips are available upon request. **Not all finishes are available with all fixtures. Please consult factory for premium finishes.**



28435 Industry Drive., Valencia, California 91355  
800-325-4448 / 661-257-0286 • fax 800-323-2346 / 661-257-0201  
www.lightwayind.com • sales@lightwayind.com



# DIFFUSER COLORS

## Primary Colors



Black (CT01)



Blue (CT02)



Green (CT03)



Red (CT04)



Yellow (CT05)

## Earthtone Colors



Mint (CT27)



Sand (CT30)



Nutmeg (CT28)



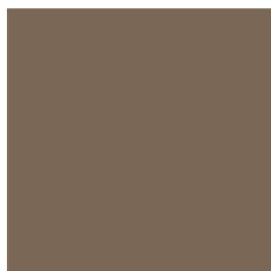
Slate (CT29)



Azure (CT20)



Dusty Rose (CT25)



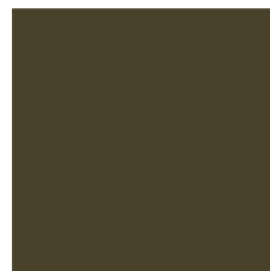
Taupe (CT23)



Cape Cod (CT31)



Peach (CT32)



Olive (CT22)

## Retro Colors



Harvest Gold (CT40)



Pumpkin (CT44)



Avocado (CT41)



Tobacco (CT42)



Parchment (CT43)

***Custom lens colors available, contact factory with Pantone or HEX code***

### DISCLAIMER:

Colors displayed on your screen may vary slightly from the actual product color due to differences in monitor calibration and lighting conditions. Sample chips are available upon request. **Not all finishes are available with all fixtures. Please consult factory for premium finishes.**



28435 Industry Drive., Valencia, California 91355  
800-325-4448 / 661-257-0286 • fax 800-323-2346 / 661-257-0201  
www.lightwayind.com • sales@lightwayind.com

