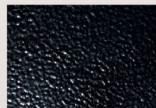
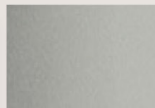




B1 Satin Black



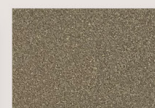
B2 Textured Black



M13 Anodized Silver



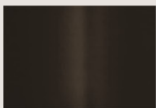
T6 Pewter



W13 Pearl Beige



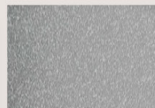
W1 Yolk White



Z1 Satin Bronze



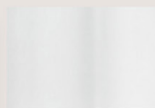
Z3 Textured Bronze



T4 Shimmer Gray



W3 Textured White



W2 Gloss White



28435 Industry Drive., Valencia, California 91355  
West Coast Sales: 800-325-4448 / 661-257-0286 • fax 800-323-2346 / 661-257-0201  
East Coast Sales: 866-350-0991 • fax 866-490-5754  
[www.lightwayind.com](http://www.lightwayind.com) • [sales@lightwayind.com](mailto:sales@lightwayind.com)



# ADAW-LED

## Construction:

- Steel housing and chassis
- Diffuser is .10" thick impact resistant extruded white acrylic

## Light Source:

- LED
- Dimming to 10% **Included**

## Notes:

- Center lockup - hardware included
- Top and bottom lens allows for up and down light ADA compliant
- UL and CUL listed DAMP location
- LED Components
  - Replaceable Module
  - CRI > 90
  - Universal 120/277 volt standard
  - 5-Year Warranty on LED Components

- **For WET listed version see MANW Series**

### ADAW-12-LED

Height - 12"  
Width - 6 1/2"  
Depth - 3 3/4"

Type:	
Job Name:	



## ORDERING INFORMATION

**Example: ADAW-12-LED-F1P-4-P2-WSA-DIM**

### ADAW

Size	LED					Kelvin	Cage	Finish	Diffuser	Options
		Watts	Source Lumens	Dimming	Energy Star	2 3000K 3 3500K 4 4000K		<b>B1</b> Satin Black <b>B2</b> Text Black <b>Z1</b> Satin Bronze <b>Z3</b> Text Bronze <b>W1</b> Yolk White <b>W2</b> Gloss White <b>T4</b> Shimmer Gray <b>M13</b> Anod Silver <b>T6</b> Pewter <b>W13</b> Pearl Beige  <b>Optional</b> (See Price List) <b>M17</b> Brass Powder <b>P2</b> Brushed Alum <b>P9</b> Brushed Nickel	WSA White Smooth Acrylic	<b>DIM</b> LED dimming driver (0 - 10v) <b>DIMLD</b> Line Voltage /TRIAC/ELV/120v See Resource Page  <b>ES</b> Energy Star listed components <b>T24</b> Title 24/JA8 Compliant (F10 & F1P configuration only)
12-LED	F1H	9	1400	0-10v	YES					
	F1O	10	863	TRIAC/ELV	YES					
	F1P	15	1361	TRIAC/ELV	YES					



28435 Industry Drive., Valencia, California 91355  
 West Coast Sales: 800-325-4448 / 661-257-0286 • fax 800-323-2346 / 661-257-0201  
 East Coast Sales: 866-350-0991 • fax 866-490-5754  
 www.lightwayind.com • sales@lightwayind.com

