



Where timeless craftsmanship meets modern design.

The traditional ceiling fixture is reimagined with a sophisticated wood trim band, blending natural warmth with contemporary elegance. By incorporating wood into interior applications, this fixture does more than illuminate—it transforms the atmosphere. Wood introduces durability, texture, and a timeless aesthetic, while also enhancing comfort, well-being, and productivity. It's not merely decorative; it's a design element that connects people to nature, enriches mood, and adds character to any space.

Choose from a curated selection of faux wood finishes—Bamboo, Maple, Teak, or Walnut—each offering its own unique grain and tone to complement a wide range of interiors.

Bands available with opaque or semi-translucent bands, allowing you to tailor the glow to your desired ambiance whether soft and diffused or crisp and defined.

Adding wood trim to lighting fixtures introduces warmth, depth, and a sense of craftsmanship. It elevates interiors by balancing functionality with artistry, making the fixture not just a source of light but a focal point of design.



Construction:

- The fixture features a faux-wood side diffuser, offered with either non-translucent or semi-translucent lens options, surrounding a traditional white smooth acrylic lens to accommodate a wide range of aesthetic and functional design goals.
- Standard light distribution is calibrated to deliver 10% uplight and 90% downlight. For customized distribution configurations, please contact the factory.
- The bottom diffuser is crafted from white textured acrylic.
- The housing is built from durable steel and finished with a sleek, powder-coated surface for enhanced protection and visual appeal.

Light Source:

- LED
- Incandescent socket base

Notes:

- Mounting Kit Included for standard J-box
- Finish options applies only with optional battery backup extension ring or Center Finial
- **Build America, Buy America Act Compliant**
 - Replaceable Module
 - CRI > 90
 - Dimming (10% or 1%)
 - Universal 120/277 volt standard
 - 5-Year Warranty on LED Components
- For a pendant mounted version see the **LDWH**

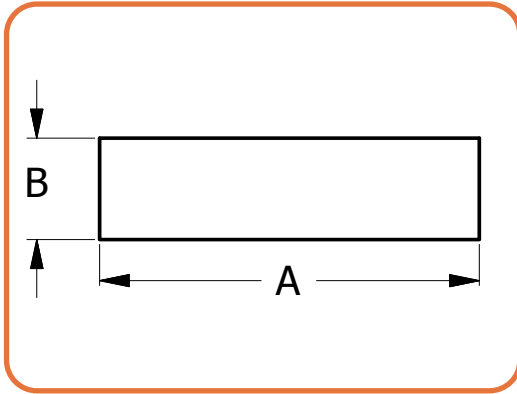
Type:	
Job Name:	



For Pedant mount fixture, please see the LDWH

DIFFUSER OPTIONS





Shown with optional battery back, adds 1 3/4" to fixture height

	DIM 'A'	DIM 'B'
LDWC-12	12.25"	4.5"
LDWC-15	15"	4.5"
LDWC-19	19"	5.25"
LDWC-24	24"	8"
LDWC-30	30"	8"
LDWC-36	36"	8"

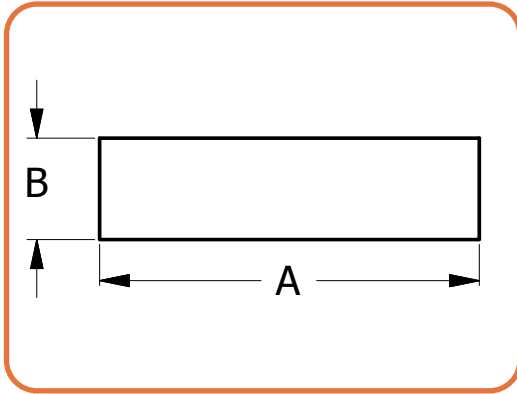
LED BASED ORDERING INFORMATION

Example: LDWC-15-LED-F1P-4-DV4-DIM

LDWC

Size	LED	Watts	Source Lumens	Dimming	Energy Star	Kelvin	Finish	Side Diffusers	Options
12-LED	F1L	9	1400	0-10v	YES	1 2700K	<i>(See Notes)</i> Only Applies with BB10 option Finish Options on page 5	Maple DV1 Opaque Maple DT1 Semi-Translucent Maple Bamboo DV2 Opaque Bamboo DT2 Semi-Translucent Bamboo Teak DV3 Opaque Teak DT3 Semi-Translucent Teak Walnut DV4 Opaque Walnut DT4 Semi-Translucent Walnut	DIM LED dimming driver (0 - 10v) DIMLD Line Voltage /TRIAC/ELV/120v See Resource Page ES Energy Star listed components T24 Title 24/JA8 Compliant (F10, F1P & F1Q configuration only) CF - Center Finial OCCHFA Concealed Occupancy Sensor See Sensor Resource Sheet Battery Backup Options (Requires 1 3/4" extension ring) Note available in LDWC-12 BB10 10 Watts (1170lm) for 90-Minutes
	F1O	10	863	TRIAC/ELV	YES	2 3000K			
	F1P	15	1361	TRIAC/ELV	YES	3 3500K			
						4 4000K			
						5 5000K			
15-LED	F1K	13	2115	0-10v	YES				
	F1P	15	1361	TRIAC/ELV	YES				
	F1Q	23	2057	TRIAC/ELV	YES				
19-LED	L1A	36	4000	0-10v	NO				
	F1Q	23	2057	TRIAC/ELV	YES				
24-LED	L1A	36	4000	0-10v	NO				
30-LED	O4C	36	4840	0-10v	NO				
36-LED	O8C	72	9680	0-10v	NO				
	O12C	107	14520	0-10v	NO				





	DIM 'A'	DIM 'B'
LDWC-12	12.25"	4.5"
LDWC-15	15"	4.5"
LDWC-19	19"	5.25"
LDWC-24	24"	8"
LDWC-30	30"	8"
LDWC-36	36"	8"



INCANDESCENT BASED ORDERING INFORMATION

Example: LDWC-36-8E26-NL-DV4

LDWC

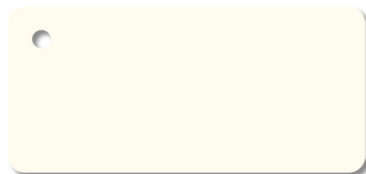
NL

Size	Socket	Watts	Source Lumens	Dimming	Energy Star	Kelvin	Finish	Side Diffusers	Options
12	2E26			TRIAC/ELV		NL Lamps provided by others	Not an option	Maple DV1 Opaque Maple DT1 Semi-Translucent Maple Bamboo DV2 Opaque Bamboo DT2 Semi-Translucent Bamboo Teak DV3 Opaque Teak DT3 Semi-Translucent Teak Walnut DV4 Opaque Walnut DT4 Semi-Translucent Walnut	CF - Center Finial
15	2E26			TRIAC/ELV					
19	3E26			TRIAC/ELV					
24	4E26			TRIAC/ELV					
30	8E26			TRIAC/ELV					
36									

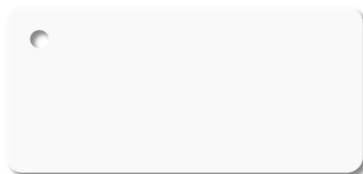


FINISHES

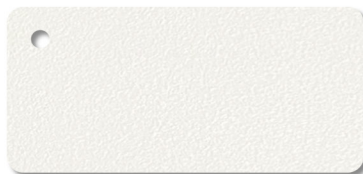
Standard Finishes



W1 Yolk



W2 Gloss White



W3 Textured White



W13 Pearl Beige



B1 Satin Black



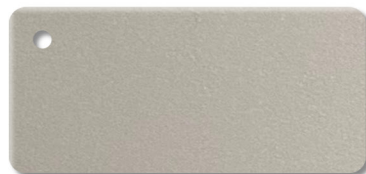
B2 Textured Black



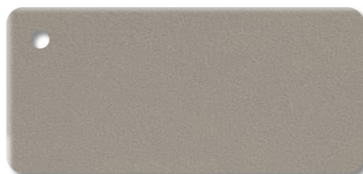
Z3 Textured Bronze



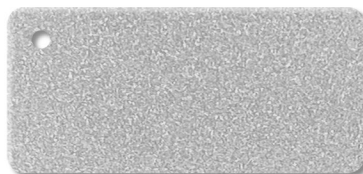
Z1 Satin Bronze



M13 Anodized Silver



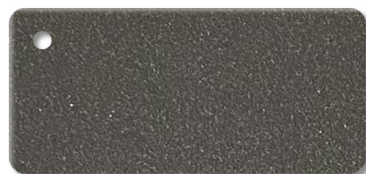
T4 Shimmer Gray



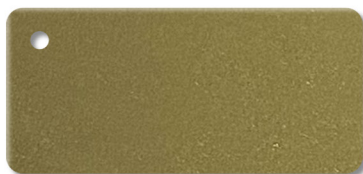
T6 Pewter



T1 Silver Gray



T5 Textured Silver



M17 Brass Powder

Premium Finishes - Contact Factory For Pricing



U12 Parkers Blue



U13 Cornflower Blue



A15 Medium Gray



G13 Sage Green



W18 Sand Fossil



R4 Deep Red



M20 Tuscan Sun



D12 Butterscotch

DISCLAIMER:

Colors displayed on your screen may vary slightly from the actual product color due to differences in monitor calibration and lighting conditions. Sample chips are available upon request. **Not all finishes are available with all fixtures. Please consult factory for premium finishes.**



28435 Industry Drive., Valencia, California 91355
800-325-4448 / 661-257-0286 • fax 800-323-2346 / 661-257-0201
www.lightwayind.com • sales@lightwayind.com

