

# VTPV-LED

## Construction:

- Steel chassis and end caps
- Perforated Front
- Diffuser is white smooth acrylic

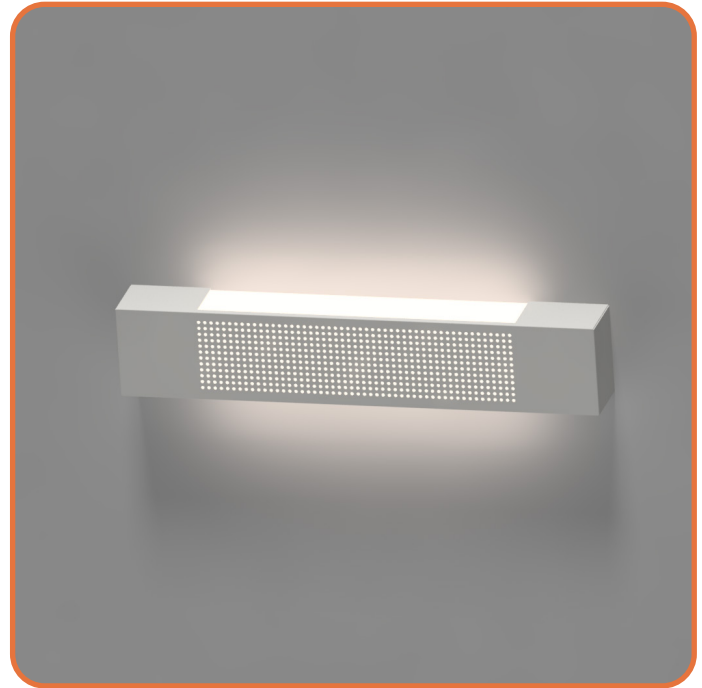
## Light Source:

- LED
- Dimming to 10% **Included**

## Notes:

- Mounts to standard J-Box with slotted anchor holes
- Optional battery backup
- Vertical or Horizontal mounting
- ADA compliant
- Optional independent nightlight circuit -Uplight only circuit
- UL and CUL listed **DAMP** location
- LED Components
  - Replaceable Module
  - CRI > 80
  - Universal 120/277 volt standard
  - 5-Year Warranty on LED Components

Type:	
Job Name:	



Length - 24" - 36" - 48" - 60" - 72" - 96"

Height - 4 1/4"

Depth - 3"



## ORDERING INFORMATION

Example: VTPV-36-LED-O3B-2-W1-WSA

VTPV

Size	LED	Watts	Source Lumens	Dimming	Energy Star	Kelvin	Cage	Finish	Diffuser	Options
						2 3000K 4 4000K		<b>B1</b> Satin Black <b>B2</b> Text Black <b>Z1</b> Satin Bronze <b>Z3</b> Text Bronze <b>W1</b> York White <b>W2</b> Gloss White <b>W3</b> Text White <b>T4</b> Shimmer Gray <b>M13</b> Anod Silver <b>T6</b> Pewter <b>W13</b> Pearl Beige	<b>WSA</b> White Smooth Acrylic	<b>DIM</b> LED dimming driver (0 - 10v) <b>DIMLD</b> Line Voltage /TRIAC/ELV/120v See Resource Page
<b>24-LED</b>	<b>O2B</b>	15	2000	0-10v	NO	<b>Optional</b> 3 3500K		<b>Optional</b> (See Price List) <b>M17</b> Brass Powder		<b>ES</b> Energy Star listed components <b>T24</b> Title 24/JA8 Compliant (F1Y configuration only)
	<b>F1Y</b>	30	3235	TRIAC/ELV	YES					<b>90CRI</b> Consult Factory
<b>36-LED</b>	<b>O3B</b>	22	3000	0-10v	NO					<b>OCCHFA</b> Concealed Occupancy Sensor See Sensor Resource Sheet
<b>48-LED</b>	<b>O4B</b>	29	4000	0-10v	NO					<b>Battery Backup Options</b> (Available with 0-10v only)
<b>72-LED</b>	<b>O6C</b>	54	7260	0-10v	NO					<b>BB10</b> 10 Watts (1170lm) for 90-Minute
<b>96-LED</b>	<b>O8C</b>	72	9680	0-10v	NO					



28435 Industry Drive., Valencia, California 91355  
 West Coast Sales: 800-325-4448 /661-257-0286 • fax 800-323-2346 /661-257-0201  
 East Coast Sales: 866-350-0991 • fax 866-490-5754  
 www.lightwayind.com • sales@lightwayind.com



Revision: 06/04/2021