



Classic linen shades bring timeless charm and sophistication, effortlessly elevating any light fixture. Lightway's bonded linen lens combines this traditional appeal with modern functionality, featuring the durability and easy maintenance of acrylic—simply clean with a damp cloth to remove dust or dirt.

A wide range of standard finishes, a concealed infrared occupancy sensor, and an integral battery backup are just a few of the customizable options available. Designed with universal 120/277 voltage and backed by a 5-year warranty on LED components, these fixtures are available in a variety of colors and sizes. Proudly made in America, they also pair beautifully with companion pendant mount (LCLH) fixtures.



# LCLC-LED

## Construction:

- Bottom Diffuser is a White Textured Acrylic
- Side Diffuser is a Translucent Bonded Linen Material with a variety of color options.

## Light Source:

- LED
- Incandescent socket base

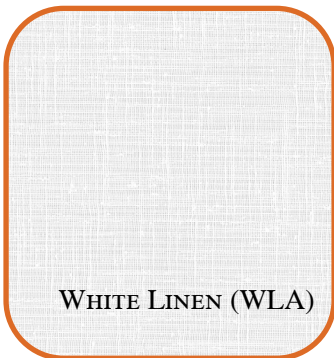
## Notes:

- Mounting Kit Included for standard J-box
- Multiple canopy and stem options available.
- Custom overall heights available
- The LCLC has a typical lead time of 6 weeks, consult factory for any minimum order quantities and setup fees
- Finish options applies only with optional battery backup extension ring
- **Build America, Buy America Act Compliant**
- UL and CUL listed **DAMP** location
- LED Array
  - Replaceable Module
  - CRI > 90
  - Dimming (10% or 1%)
  - Universal 120/277 volt standard
  - 5-Year Warranty on LED Components
- For a pendant mounted version see the **LCLH**

Type:	
Job Name:	



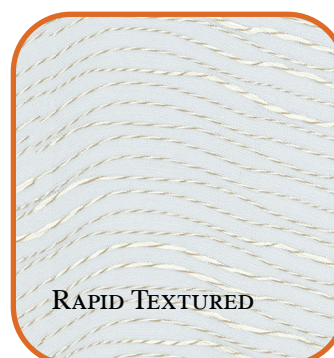
## DIFFUSER OPTIONS



WHITE LINEN (WLA)



CHOCOLATE TEXTURED



RAPID TEXTURED

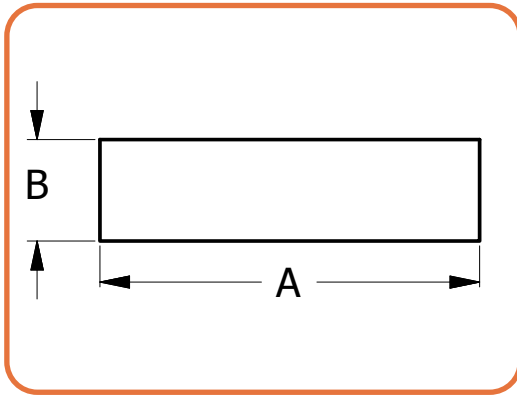


BLACK TEXTURED



SABLE LINEN (SLA)





Shown with Battery Backup Extension Ring

	DIM 'A'	DIM 'B'
LCLC-12	12.25"	4.5"
LCLC-15	15"	4.5"
LCLC-19	19"	5.25"
LCLC-24	24"	8"
LCLC-30	30"	8"
LCLC-36	36"	8"



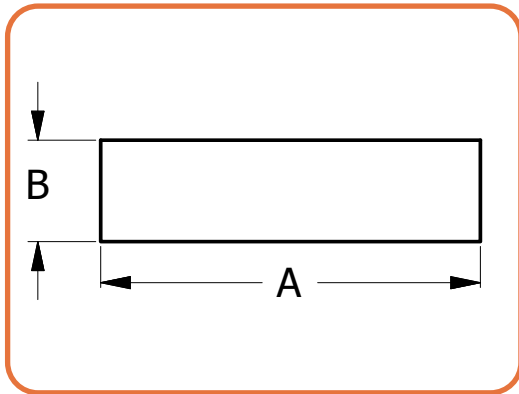
## LED BASED ORDERING INFORMATION

Example: LCLC-15-LED-F1P-4-W2-CTA-DIM

LCLC

Size	LED					Kelvin	Cage	Finish	Diffusers	Options
		Watts	Source Lumens	Dimming	Energy Star					
12-LED	F1L	9	1400	0-10v	YES	1 2700K		(See Notes) See finishes on page 5	WLA White Linen Acrylic	<b>DIM</b> LED dimming driver (0 - 10v) <b>DIMLD</b> Line Voltage /TRIAC/ELV/120v See Resource Page  <b>ES</b> Energy Star listed components <b>T24</b> Title 24/JA8 Compliant (F10, F1P & F1Q configuration only)  <b>CF - Center Finial</b>  <b>OCCHFA</b> Concealed Occupancy Sensor See Sensor Resource Sheet  <b>Battery Backup Options</b> (Requires 1 3/4" extension ring) Available in LCLC-15, 19 & 24 <b>BB10</b> 10 Watts (1170lm) for 90-Minutes
	F1O	10	863	TRIAC/ELV	YES	2 3000K			CTA Chocolate Textured Acrylic	
	F1P	15	1361	TRIAC/ELV	YES	3 3500K			<b>Optional Trim Options</b> (Consult Factory)	
						4 4000K			SLA Sable Linen Acrylic	
						5 5000K			RTA Rapid Textured Acrylic	
15-LED	F1K	13	2115	0-10v	YES			BTA Black Textured Acrylic		
	F1P	15	1361	TRIAC/ELV	YES					
	F1Q	23	2057	TRIAC/ELV	YES					
19-LED	L1A	36	4000	0-10v	NO					
	F1Q	23	2057	TRIAC/ELV	YES					
24-LED	L1A	36	4000	0-10v	NO					
30-LED	O4C	36	4840	0-10v	NO					
36-LED	O8C	72	9680	0-10v	NO					
	O12C	107	14520	0-10v	NO					





	DIM 'A'	DIM 'B'
LCLC-12	12.25"	4.5"
LCLC-15	15"	4.5"
LCLC-19	19"	5.25"
LCLC-24	24"	8"
LCLC-30	30"	8"
LCLC-36	36"	8"

## INCANDESCENT BASED ORDERING INFORMATION

Example: LCLC-24-4E26-NL-W2-CTA

LCLC

Size	LED					Kelvin	Cage	Finish	Diffusers	Options
		Watts	Source Lumens	Dimming	Energy Star	NL Lamps provided by others		(See Notes) See finishes on page 5	<b>WLA</b> White Linen Acrylic <b>CTA</b> Chocolate Textured Acrylic  <b>Optional Trim Options</b> (Consult Factory)  <b>SLA</b> Sable Linen Acrylic  <b>RTA</b> Rapid Textured Acrylic  <b>BTA</b> Black Textured Acrylic	<b>CF - Center Finial</b>
12	2E26			TRIAC/ELV						
15	2E26			TRIAC/ELV						
19	3E26			TRIAC/ELV						
24	4E26			TRIAC/ELV						
30	4E26			TRIAC/ELV						
	6E26			TRIAC/ELV						
	8E26			TRIAC/ELV						
36										



