

REFW 650 LED

Construction:

- Steel housing and chassis
- White textured polycarbonate lens

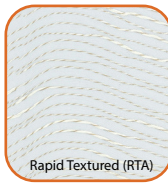
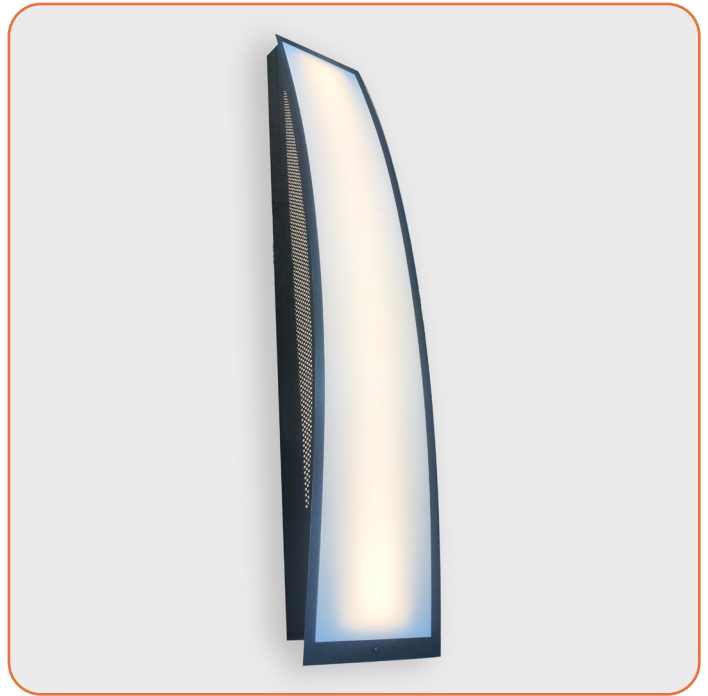
Light Source:

- LED
- Dimming to 10% **Included**

Notes:

- Horizontal or vertical mounting
- ADA compliant
- Optional battery backup
- UL and CUL listed DAMP location
- LED Components
 - CRI > 90
 - Universal 120/277 volt standard
 - 5-Year Warranty on LED Components

Type:	
Job Name:	



REFW-650

Height - 50"
Width - 6"
Depth - 4"



ORDERING INFORMATION

Example: REFW-650-LED-O4C-3-T6-WTP

REFW

Size	LED					Kelvin	Cage	Finish	Diffuser	Options
		Watts	Source Lumens	Dimming	Energy Star					
650-LED	O4C	36	4840	0-10v	NO	2 3000K 3 3500K 4 4000K	B1 Satin Black B2 Text Black Z1 Satin Bronze Z3 Text Bronze W1 Yolk White W2 Gloss White W3 Text White T4 Shimmer Gray M13 Anod Silver T6 Pewter W13 Pearl Beige Optional (See Price List) M17 Brass Powder P2 Brushed Alum P9 Brushed Nickel	WTP White Textured Polycarbonate Optional Lens Material (see Price List) WLA White Linen Acrylic RTA Rapid Textured Acrylic	DIM LED dimming driver (0 - 10v) Battery Backup Options BB10 10 Watts (1170lm) for 90-Minutes	



28435 Industry Drive., Valencia, California 91355
 West Coast Sales: 800-325-4448 / 661-257-0286 • fax 800-323-2346 / 661-257-0201
 East Coast Sales: 866-350-0991 • fax 866-490-5754
 www.lightwayind.com • sales@lightwayind.com

